

Key

**FORESTRY QUIZ**  
**Part One**

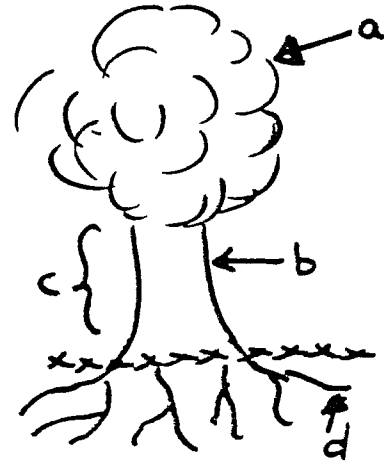
Name: \_\_\_\_\_

Total: \_\_\_\_\_

25

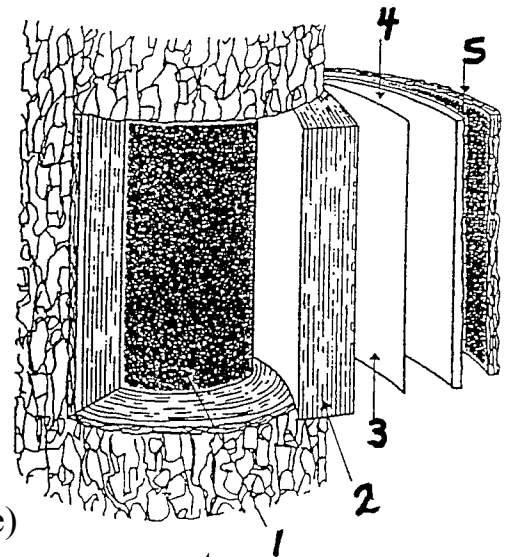
1. Look at the picture of a tree and label the tree parts.

- a) needle/leaf
- b) bark
- c) trunk
- d) roots



2. Label the 5 parts of the tree shown in the diagram.

- 1) heartwood
- 2) sapwood
- 3) cambium
- 4) inner bark
- 5) outer bark



Answers for #1 and 2. (answers can only be used once)

- |            |                |            |           |
|------------|----------------|------------|-----------|
| cambium    | needles/leaves | sapwood    | root      |
| outer bark | fruit          | inner bark | heartwood |
| trunk      | bark           | seeds      | stem      |

## Key

### 3. Matching:

- |  |                     |
|--|---------------------|
| _d_ a chemical reaction in the leaves that produces food | a) sapwood          |
| _g_ provides support for the tree                        | b) herbaceous plant |
| _b_ short plant with soft stem                           | c) sun              |
| _f_ the part that allows trees to breath                 | d) photosynthesis   |
| _h_ the oldest part of a tree                            | e) growth rings     |
| _e_ these tell the age of a tree                         | f) leaf             |
| _a_ tubes that transport water and minerals              | g) trunk            |
| _c_ this is needed for photosynthesis to occur           | h) heartwood        |

4. Use your **Tree Book** to identify the following tree:

This tree has flat needles with blunt ends. The needles are of different lengths and the top branch droops. This tree is called Western Hemlock and is used for carving.

5. What is a controlled burn and why might a forestry company use it?

(2 marks) A cool burn that may be used to control insects and disease.

The forest can quickly return to health.

6. What is an uncontrolled burn and why can it be dangerous? (2 marks)

A hot burn or wild fire that can damage the ground and kill everything.

7. **Define:** a) coniferous – a cone bearing tree with needles.

b) deciduous – a tree that sheds its leaves and does not have cones.

\*Bonus c) environment- your surroundings